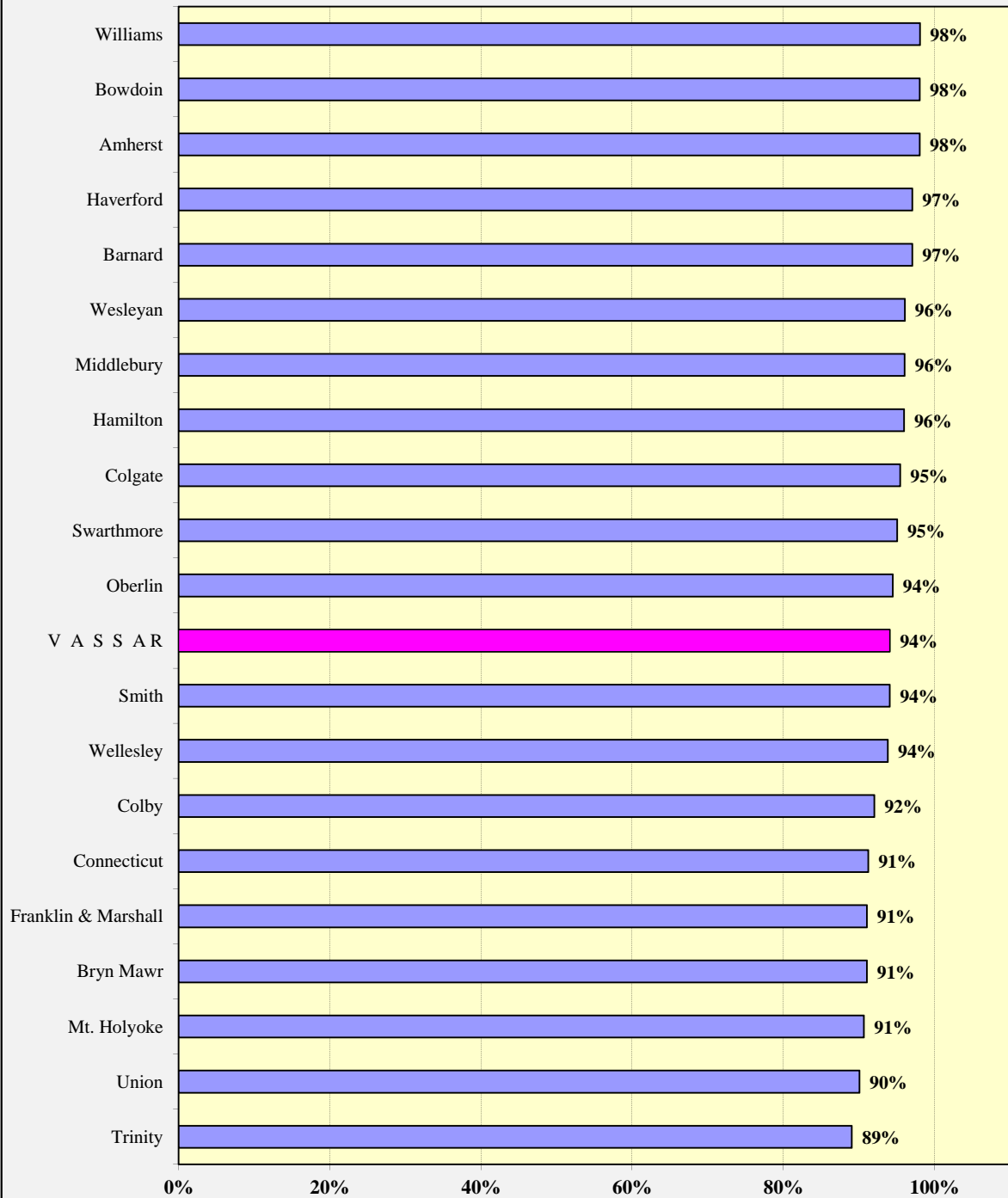


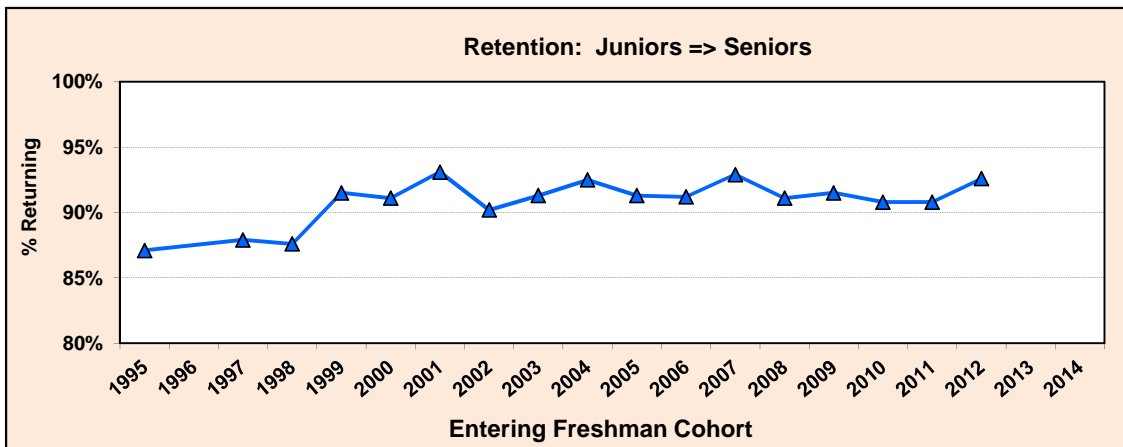
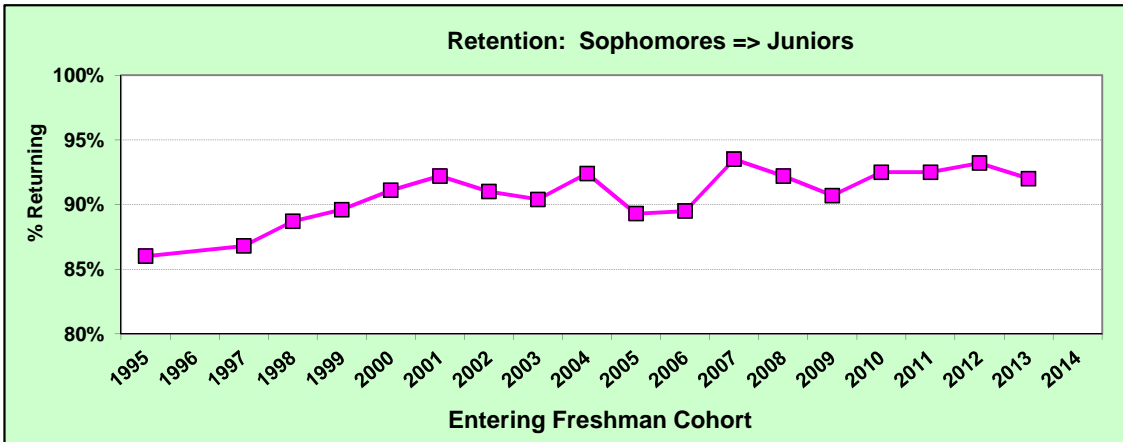
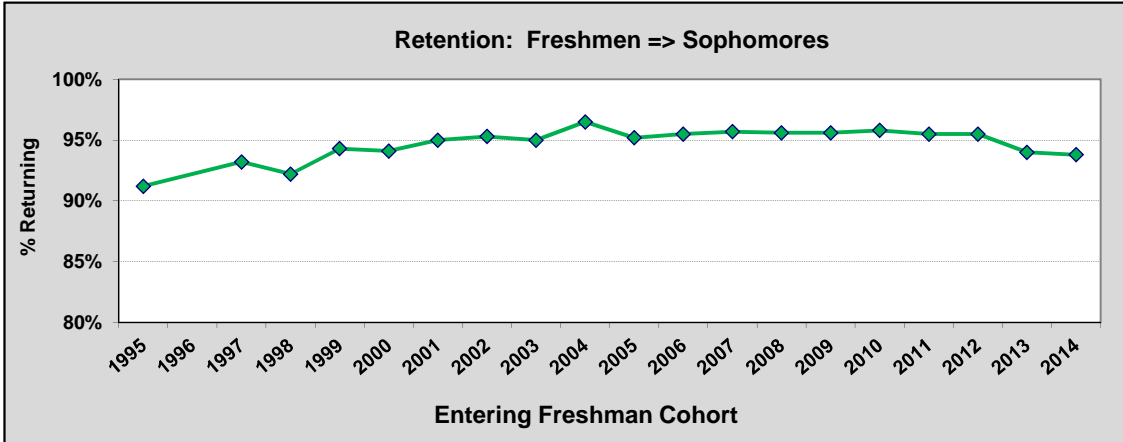
**Average Freshman Retention Rate for New Cohorts Enrolled Fall 2010 - 2013**  
**Vassar and its 21 Primary Reference Colleges**  
**(US News - August, 2015)**



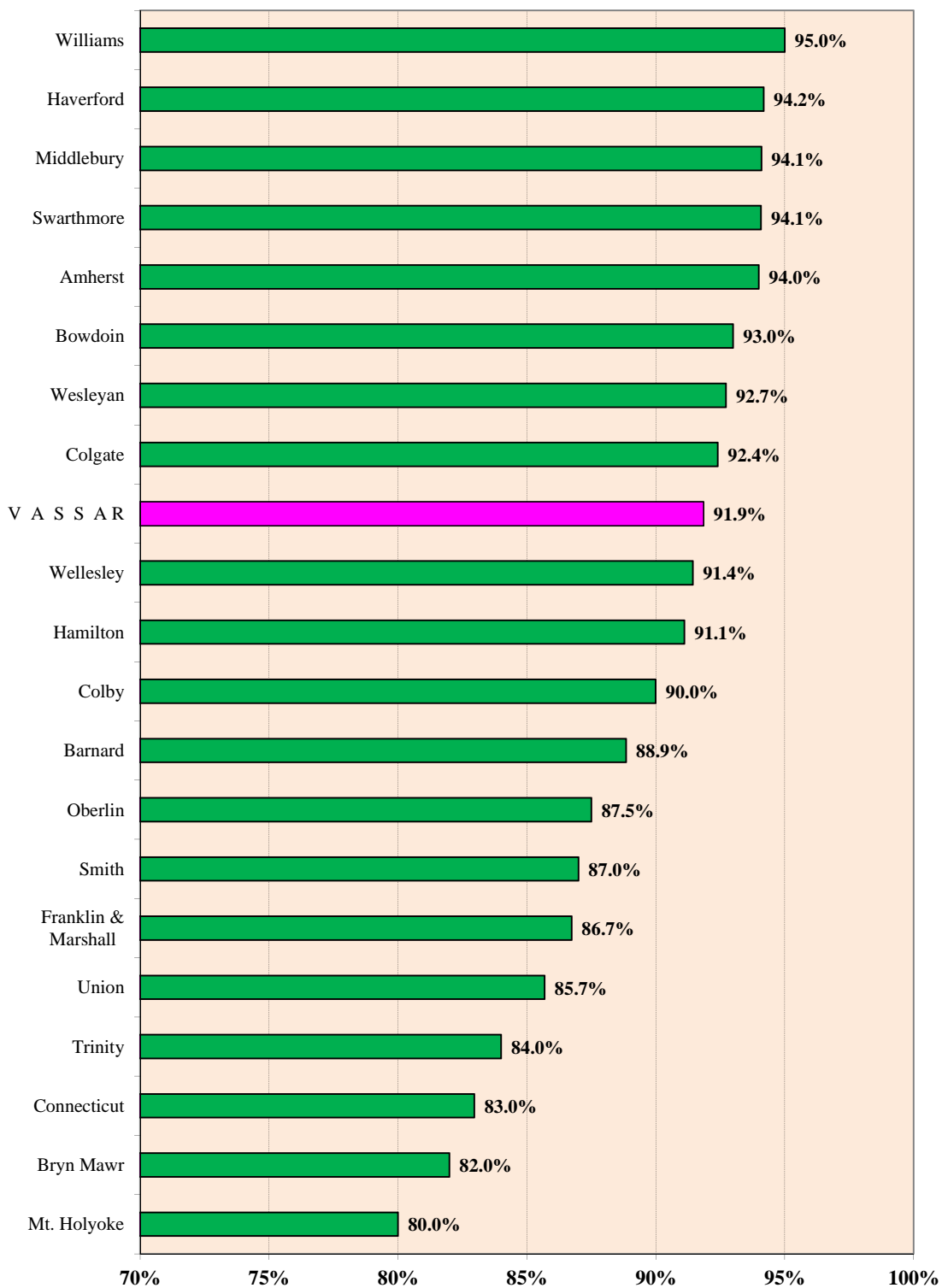
## Vassar Retention Rates by Entering Freshman Cohort

**Entering Freshman**

Cohort of: ==>	<u>2004</u>	<u>2005</u>	<u>2006</u>	<u>2007</u>	<u>2008</u>	<u>2009</u>	<u>2010</u>	<u>2011</u>	<u>2012</u>	<u>2013</u>	<u>2014</u>
Freshmen -> Sophomores	96.5%	95.2%	95.5%	95.7%	95.6%	95.6%	95.8%	95.5%	95.5%	94.0%	93.8%
Sophomores -> Juniors	92.4%	89.3%	89.5%	93.5%	92.2%	90.7%	92.5%	92.5%	93.2%	92.0%	
Juniors -> Seniors	92.5%	91.3%	91.2%	92.9%	91.1%	91.5%	90.8%	90.8%	92.6%		

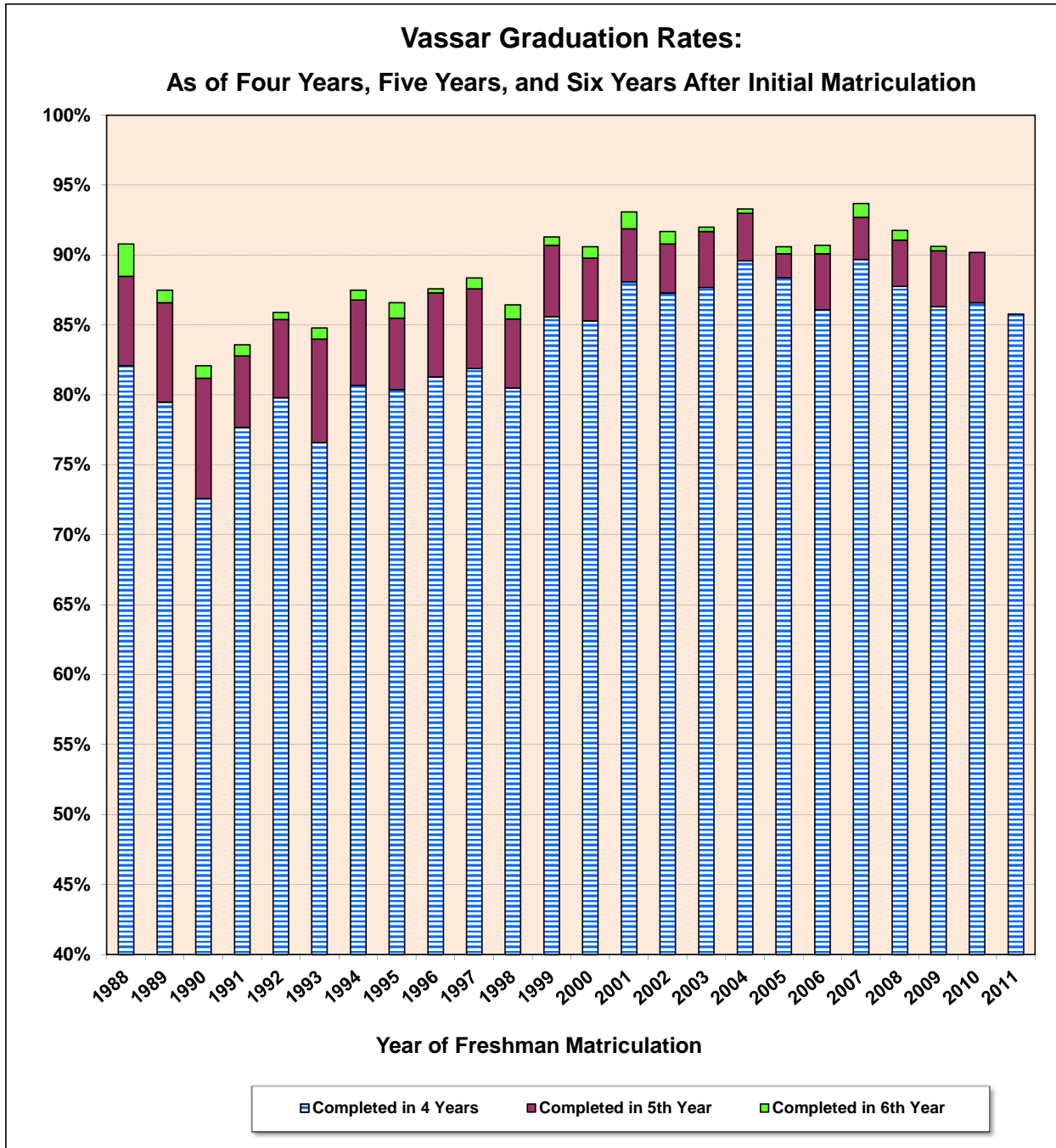


**Six-Year Graduation Rate - Class of 2012:  
 Entering Freshmen in 2008, Total Graduates through 2014  
 For Vassar and its 21 Primary Reference Colleges**



## Graduation Rates by Freshman Cohort (Class Year) and Number of Years Following Matriculation

Entering Freshman Cohort of ==>	2000	2001	2002	2003	2004	2005	2006	2007	2008	2009	2010	2011
Class Year ==>	<u>2004</u>	<u>2005</u>	<u>2006</u>	<u>2007</u>	<u>2008</u>	<u>2009</u>	<u>2010</u>	<u>2011</u>	<u>2012</u>	<u>2013</u>	<u>2014</u>	<u>2015</u>
Completed in 4 Years	85.3%	88.1%	87.3%	87.7%	89.6%	88.4%	86.1%	89.7%	87.8%	86.3%	86.6%	85.8%
Completed in 5th Year	4.5%	3.8%	3.5%	4.0%	3.4%	1.7%	4.0%	3.0%	3.3%	4.0%	3.6%	
Completed in 6th Year	0.8%	1.2%	0.9%	0.3%	0.3%	0.5%	0.6%	1.0%	0.7%	0.3%		
<b>Total Rate for 6 Years</b>	<b>90.6%</b>	<b>93.1%</b>	<b>91.7%</b>	<b>92.0%</b>	<b>93.3%</b>	<b>90.6%</b>	<b>90.7%</b>	<b>93.7%</b>	<b>91.8%</b>	<b>90.6%</b>		



**Graduation Rates by Year of Entering Freshman Cohort (or Graduating Class Year):  
Detail by Gender, by Race/Ethnic Background, and by Financial Aid Status**

**Entering Freshman:**

Year of Matriculation:	1998	1999	2000	2001	2002	2003	2004	2005	2006	2007	2008	2009
Graduating Class Year:	2002	2003	2004	2005	2006	2007	2008	2009	2010	2011	2012	2013
6th Year* after Matriculation:	2004	2005	2006	2007	2008	2009	2010	2011	2012	2013	2014	2015

**Gender**

**Male**

Matriculants:	247	252	250	248	255	264	235	273	256	268	273	266
6-Yr Graduates* :	211	227	229	234	234	243	212	244	229	249	250	228
Graduation Rate:	85.4%	90.1%	91.6%	94.4%	91.8%	92.0%	90.2%	89.4%	89.5%	92.9%	91.6%	85.7%

**Female**

Matriculants:	379	381	389	447	377	367	419	374	412	409	365	392
6-Yr Graduates* :	330	352	348	413	346	338	398	342	377	385	336	368
Graduation Rate:	87.1%	92.4%	89.5%	92.4%	91.8%	92.1%	95.0%	91.4%	91.5%	94.1%	92.1%	93.9%

**Race/Ethnic Background**

	2004	2005	2006	2007	2008	2009	2010	2011	2012	2013	2014	2015
<b>Asian American</b>												
Matriculants:	52	60	59	54	53	55	70	54	52	67	58	58
6-Yr Graduates* :	48	53	55	52	47	50	66	48	45	61	51	55
Graduation Rate:	92.3%	88.3%	93.2%	96.3%	88.7%	90.9%	94.3%	88.9%	86.5%	91.0%	87.9%	94.8%

**Black/African-Am.**

Matriculants:	36	23	30	33	30	24	37	38	25	23	25	35
6-Yr Graduates* :	30	20	23	30	28	22	35	32	23	20	23	30
Graduation Rate:	83.3%	87.0%	76.7%	90.9%	93.3%	91.7%	94.6%	84.2%	92.0%	87.0%	92.0%	85.7%

**Latino/a, Hispanic Am.**

Matriculants:	39	32	30	42	29	33	39	43	42	55	41	71
6-Yr Graduates* :	28	30	25	34	25	29	34	38	39	50	34	64
Graduation Rate:	71.8%	93.8%	83.3%	81.0%	86.2%	87.9%	87.2%	88.4%	92.9%	90.9%	82.9%	90.1%

**Native Am./ AK Native**

Matriculants:	1	2	3	5	4	2	2	1	1	1	1	2
6-Yr Graduates* :	1	2	1	4	3	2	2	0	0	1	0	1
Graduation Rate:	100.0%	100.0%	33.3%	80.0%	75.0%	100.0%	100.0%	0.0%	0.0%	100.0%	0.0%	50.0%

**White/Caucasian Am.**

Matriculants:	470	478	484	508	473	478	466	482	488	467	444	429
6-Yr Graduates* :	410	438	442	478	436	441	436	441	440	439	417	388
Graduation Rate:	87.2%	91.6%	91.3%	94.1%	92.2%	92.3%	93.6%	91.5%	90.2%	94.0%	93.9%	90.4%

**Two or More Races(\*\*)**

Matriculants:									20	18	26	24
6-Yr Graduates* :									20	18	24	22
Graduation Rate:									100.0%	100.0%	92.3%	91.7%

**International (non-US Cit.)**

Matriculants:	28	37	14	32	30	32	40	29	38	46	43	38
6-Yr Graduates* :	24	35	13	30	29	30	37	27	37	45	37	35
Graduation Rate:	85.7%	94.6%	92.9%	93.8%	96.7%	93.8%	92.5%	93.1%	97.4%	97.8%	86.0%	92.1%

(\*\*) The methodologies both for collecting, and for reporting, information on race/ethnic background changed fundamentally and substantially for graduation rates as of Vassar's 2012 reporting. See second footnote, p. 4 for details.

**Financial Aid Status \*\*\***

	2004	2005	2006	2007	2008	2009	2010	2011	2012	2013	2014	2015
<b>Pell Grant Recipients</b>												
Matriculants:									51	79	85	134
6-Yr Graduates* :									43	70	79	121
Graduation Rate:									84.3%	88.6%	92.9%	90.3%

**Non-Pell Fin. Aid Recipients**

Matriculants:									138	120	107	99
6-Yr Graduates* :									125	112	96	91
Graduation Rate:									90.6%	93.3%	89.7%	91.9%

**All Other Students**

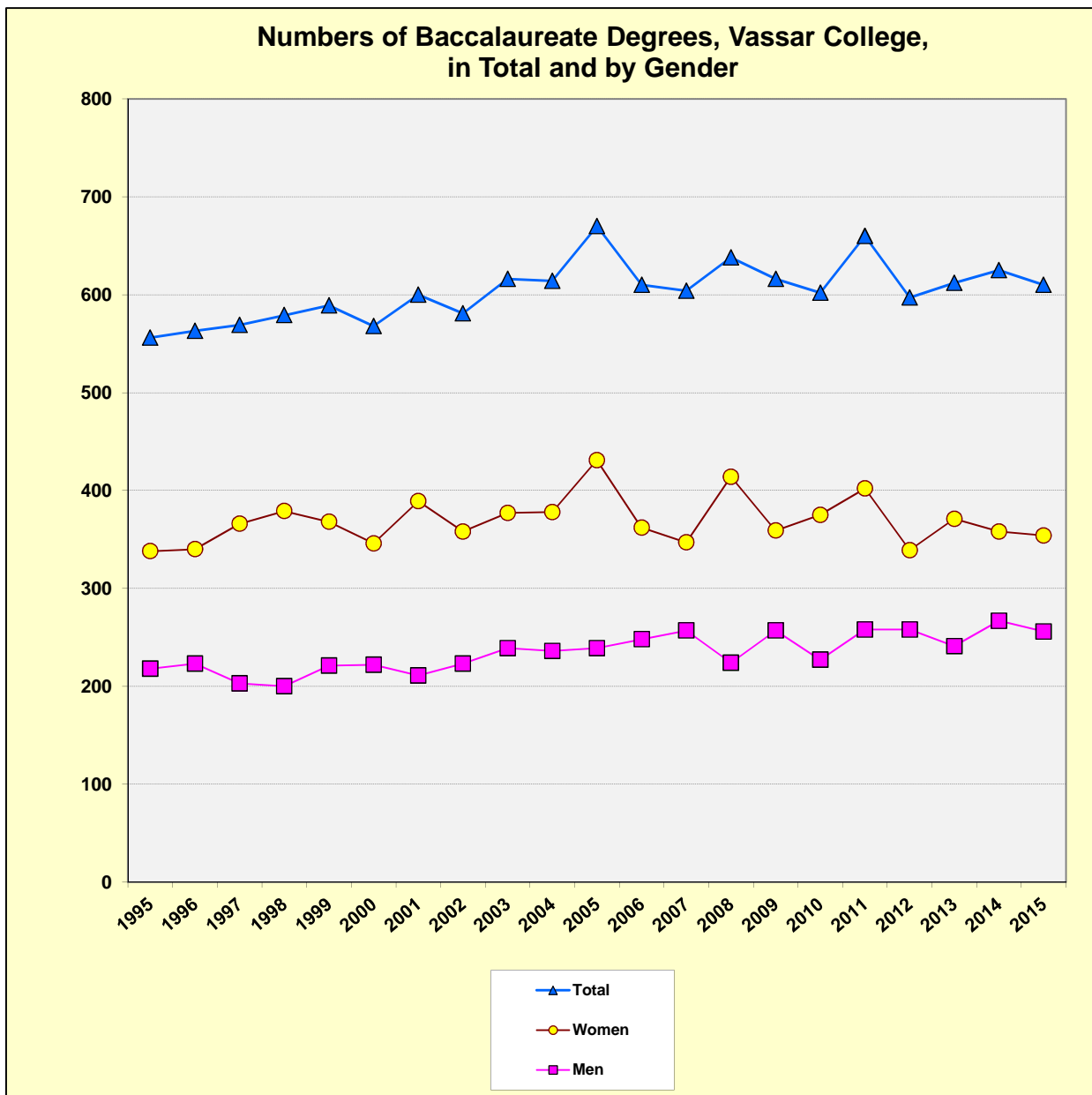
Matriculants:									479	478	446	425
6-Yr Graduates* :									441	452	411	384
Graduation Rate:									92.1%	94.6%	92.2%	90.4%

\* Federal definition of the point in time following freshman matriculation at which to measure "final" graduation rate

\*\*\* Data collected beginning with the freshman cohort entering in 2006.

## Bachelor's Degrees by Gender and Year of Graduation

Graduating Class Year ==>	<u>2005</u>	<u>2006</u>	<u>2007</u>	<u>2008</u>	<u>2009</u>	<u>2010</u>	<u>2011</u>	<u>2012</u>	<u>2013</u>	<u>2014</u>	<u>2015</u>
<b>Men</b>	239	248	257	224	257	227	258	258	241	267	256
%	36%	41%	43%	35%	42%	38%	39%	43%	39%	43%	42%
<b>Women</b>	431	362	347	414	359	375	402	339	371	358	354
%	64%	59%	57%	65%	58%	62%	61%	57%	61%	57%	58%
<b>Total</b>	<b>670</b>	<b>610</b>	<b>604</b>	<b>638</b>	<b>616</b>	<b>602</b>	<b>660</b>	<b>597</b>	<b>612</b>	<b>625</b>	<b>610</b>



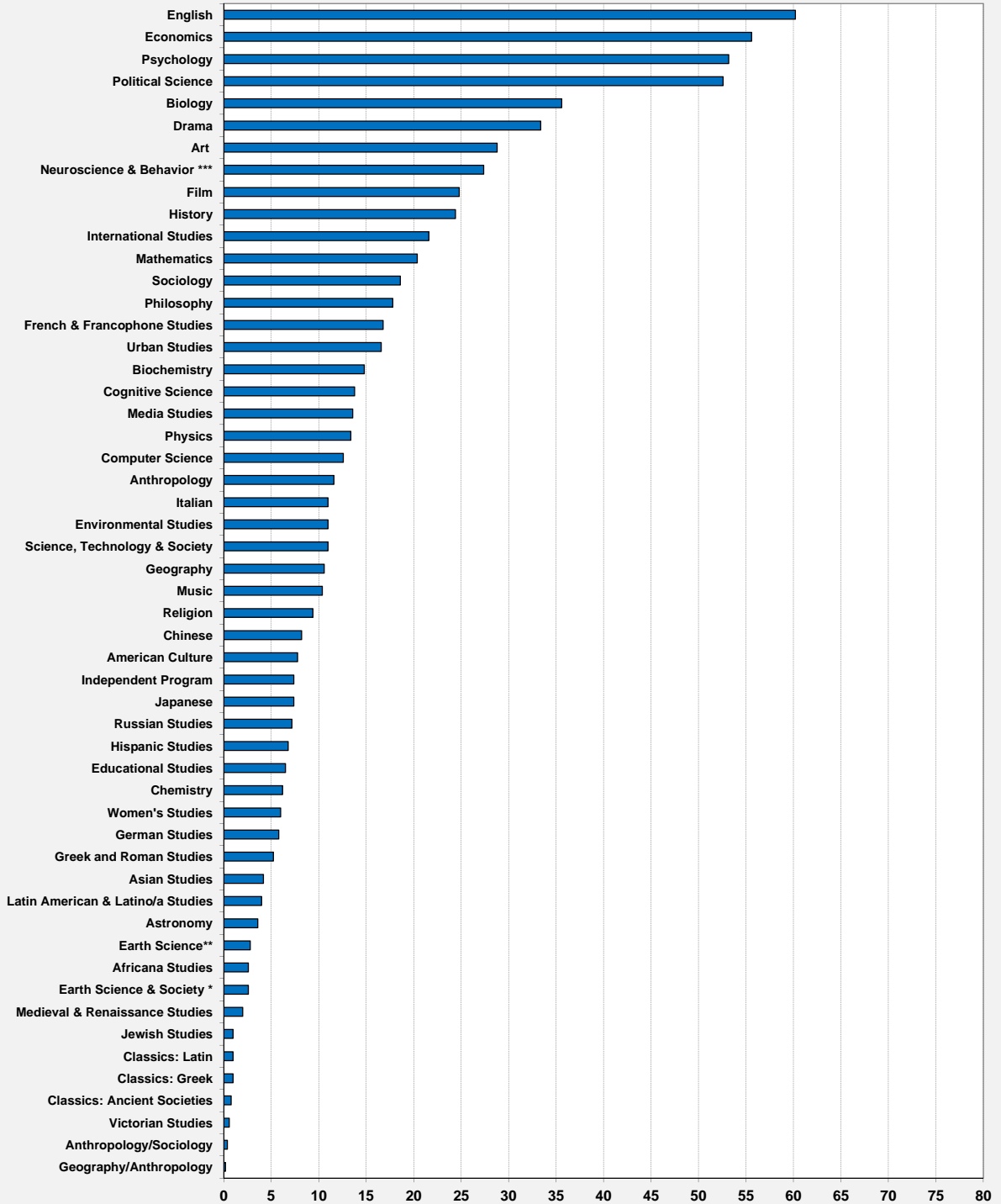
## Graduates by Major<sup>(1)</sup> and Year of Graduation

<sup>(1)</sup> Students with double majors are counted in the departments of each major.

<u>Department / Program</u>	<u>2003</u>	<u>2004</u>	<u>2005</u>	<u>2006</u>	<u>2007</u>	<u>2008</u>	<u>2009</u>	<u>2010</u>	<u>2011</u>	<u>2012</u>	<u>2013</u>	<u>2014</u>	<u>2015</u>	<u>5-Year Average Grads per Year</u>
Africana Studies	7	4	5	10	5	5	7	7	4	3	2	3	1	2.6
American Culture	13	13	10	15	6	7	6	13	11	8	8	9	3	7.8
Anthropology	21	13	14	11	18	17	16	10	8	8	20	12	10	11.6
Anthropology/Sociology	1	1	0	2	1	1	1	2	1	1	0	0	0	0.4
Art	32	42	29	44	26	35	34	29	39	32	26	23	24	28.8
Asian Studies	6	2	3	2	2	1	3	4	6	2	6	5	2	4.2
Astronomy	3	2	4	3	6	3	7	6	4	2	2	4	6	3.6
Biochemistry	4	11	5	13	9	11	11	10	13	10	17	15	19	14.8
Biology	18	21	24	13	12	30	25	30	28	38	36	31	45	35.6
Chemistry	6	9	7	9	8	10	7	15	6	8	4	6	7	6.2
Chinese			5	7	7	13	13	10	9	10	10	6	6	8.2
Classics: Ancient Societies	1	1	5	2	2	0	3	2	4	0	0	0	0	0.8
Classics: Greek	3	1	3	2	3	3	4	1	3	2	0	0	0	1.0
Classics: Latin	2	2	1	3	0	3	1	0	4	1	0	0	0	1.0
Cognitive Science	6	12	12	13	7	12	8	11	17	11	19	9	13	13.8
Computer Science	17	9	13	7	9	8	6	9	15	10	14	10	14	12.6
Drama	26	23	31	19	19	18	13	18	32	33	36	35	31	33.4
Earth Science & Society *	0	0	0	1	0	0	2	0	0	4	8	1	0	2.6
Earth Science**	4	7	6	3	3	6	4	4	7	1	1	2	3	2.8
Economics	48	39	43	47	53	51	61	36	65	38	45	67	63	55.6
Educational Studies												4	9	6.5
English	60	61	77	71	81	53	56	67	79	69	44	57	52	60.2
Environmental Studies	17	15	16	11	11	13	11	15	7	9	15	13	11	11.0
Film	28	28	41	33	26	32	35	30	28	28	27	21	20	24.8
French & Francophone Studies	11	13	15	22	10	23	11	18	14	20	22	10	18	16.8
Geography	4	3	5	4	15	11	8	5	10	7	12	11	13	10.6
Geography/Anthropology	2	2	0	0	2	0	3	1	1	0	0	0	0	0.2
German Studies	4	5	5	6	3	3	2	4	6	4	4	9	6	5.8
Greek and Roman Studies										2	6	6	7	5.3
Hispanic Studies	7	7	11	7	11	14	9	13	10	9	6	6	3	6.8
History	34	35	36	34	35	41	34	37	26	38	12	24	22	24.4
Independent Program	10	6	3	8	9	6	9	12	11	10	9	5	2	7.4
International Studies	12	8	10	10	17	17	10	13	18	19	22	20	29	21.6
Italian	8	19	13	19	14	16	12	13	12	13	6	14	10	11.0
Japanese			3	5	4	7	11	12	5	7	4	13	8	7.4
Jewish Studies	1	1	4	4	4	0	3	2	1	0	2	0	2	1.0
Latin American & Latino/a St	6	3	3	3	6	10	5	7	3	5	7	4	1	4.0
Mathematics	13	12	20	17	14	16	10	11	14	21	21	24	22	20.4
Media Studies				1	13	17	18	12	19	16	7	15	11	13.6
Medieval & Renaissance Studi	1	1	1	2	3	2	1	3	5	3	1	0	1	2.0
Music	6	12	14	13	12	11	14	13	11	15	8	6	12	10.4
Neuroscience & Behavior ***	14	11	26	18	18	24	18	14	28	23	29	29	28	27.4
Philosophy	14	14	19	16	15	15	16	7	20	28	13	11	17	17.8
Physics	6	14	4	10	13	8	11	8	12	18	11	10	16	13.4
Political Science	66	64	71	53	51	61	67	51	59	42	62	57	43	52.6
Psychology	63	65	67	53	59	58	60	65	59	37	58	62	50	53.2
Religion	11	15	16	8	10	12	6	8	8	10	7	10	12	9.4
Russian Studies	5	2	4	3	11	2	2	11	2	9	7	9	9	7.2
Science, Technology & Society	10	9	10	6	6	7	8	5	2	11	13	13	16	11.0
Sociology	42	22	30	25	17	20	20	25	21	13	12	26	21	18.6
Urban Studies	14	15	20	13	19	14	18	10	16	15	18	20	14	16.6
Victorian Studies	2	1	1	0	1	1	0	1	1	1	1	0	0	0.6
Women's Studies	4	11	3	7	5	4	5	3	4	6	4	7	9	6.0
<b>Total Earned Majors :</b>	<b>693</b>	<b>686</b>	<b>768</b>	<b>708</b>	<b>711</b>	<b>752</b>	<b>725</b>	<b>713</b>	<b>788</b>	<b>730</b>	<b>724</b>	<b>754</b>	<b>741</b>	<b>747.4</b>
<b>Graduates with Double Majors:</b>	<b>77</b>	<b>72</b>	<b>98</b>	<b>98</b>	<b>107</b>	<b>114</b>	<b>109</b>	<b>111</b>	<b>128</b>	<b>133</b>	<b>112</b>	<b>129</b>	<b>131</b>	<b>122.6</b>
<b>% of Graduates with Dbl Mjr:</b>	<b>12.5%</b>	<b>11.7%</b>	<b>14.6%</b>	<b>16.1%</b>	<b>17.7%</b>	<b>17.9%</b>	<b>17.7%</b>	<b>18.4%</b>	<b>19.4%</b>	<b>22.3%</b>	<b>18.3%</b>	<b>20.6%</b>	<b>21.5%</b>	<b>19.8%</b>

\* Formerly Geography/Geology \*\* Formerly Geology \*\*\* Formerly Biopsychology

**Most Recent Five-Year Average  
Number of Graduating Seniors per Year  
By Major**

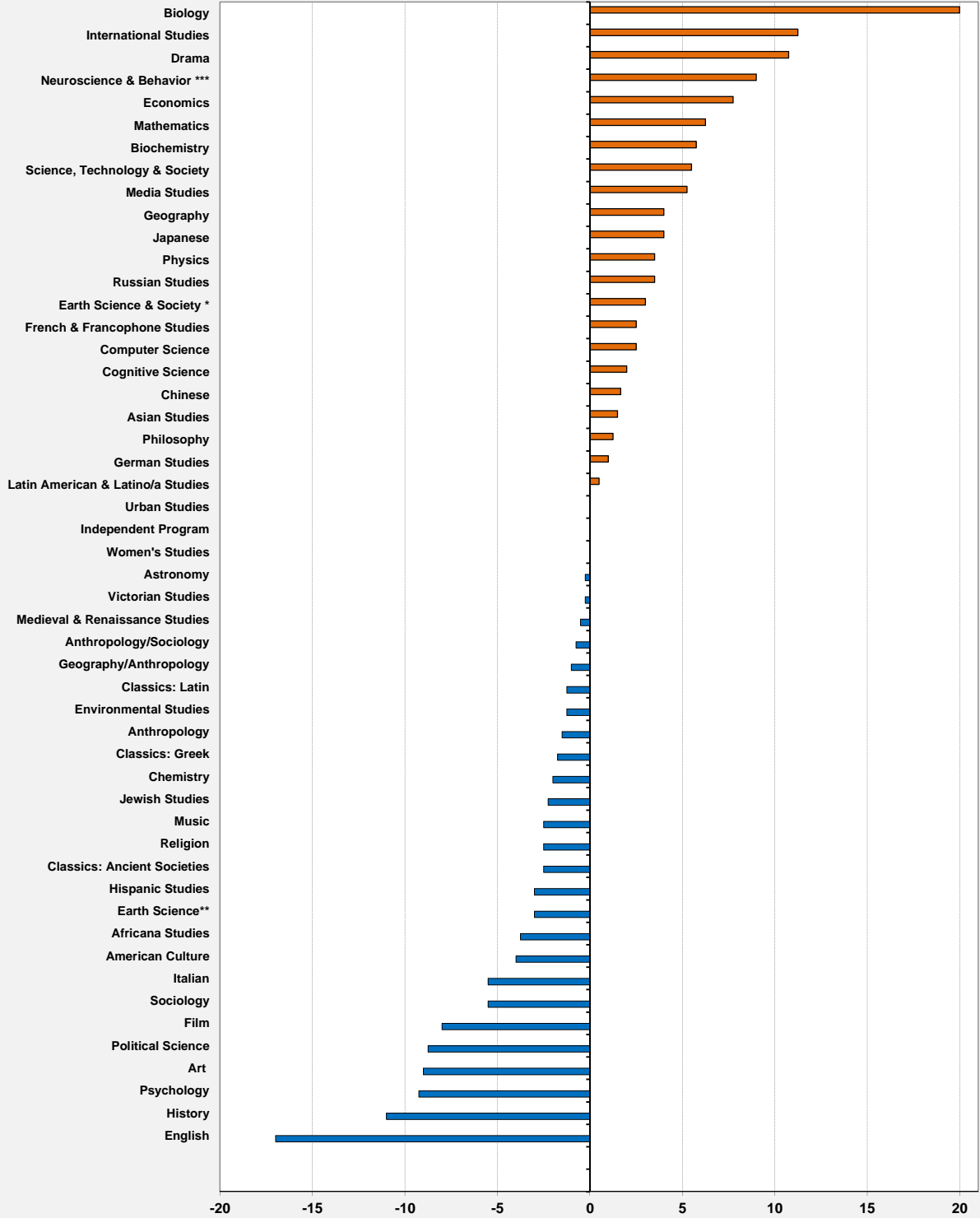


\* Formerly Geography/Geology \*\* Formerly Geology \*\*\* Formerly Biopsychology



### Change in Average Number of Majors per Year:

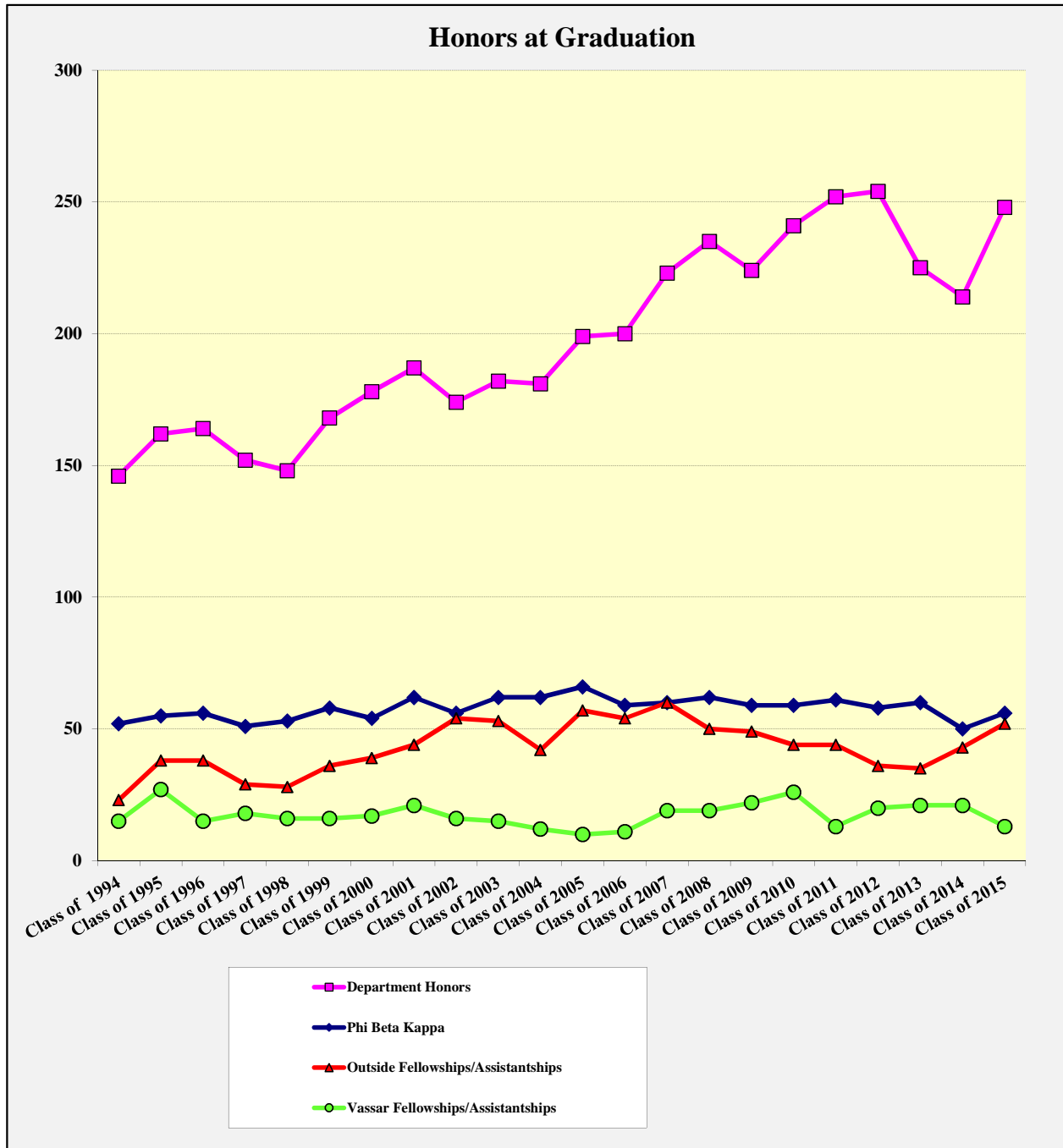
Avg.( 2012 through 2015 ) minus Avg.( 2004 through 2007 )



\* Formerly Geography/Geology \*\* Formerly Geology \*\*\* Formerly Biopsychology

## Honors and Awards at Graduation

<u>Honor / Award</u>	<i>Class of 2006</i>	<i>Class of 2007</i>	<i>Class of 2008</i>	<i>Class of 2009</i>	<i>Class of 2010</i>	<i>Class of 2011</i>	<i>Class of 2012</i>	<i>Class of 2013</i>	<i>Class of 2014</i>	<i>Class of 2015</i>
Phi Beta Kappa	59	60	62	59	59	61	58	60	50	56
Department Honors	200	223	235	224	241	252	254	225	214	248
Outside Fellowships/Assistantships	54	60	50	49	44	44	36	35	43	52
Vassar Fellowships/Assistantships	11	19	19	22	26	13	20	21	21	13



## Mean Cumulative Grade-Point Average of Graduating Seniors

**Graduating Class and Cumulative GPA**

1989	3.13	1999	3.29	2009	3.49
1990	3.12	2000	3.34	2010	3.51
1991	3.15	2001	3.34	2011	3.50
1992	3.21	2002	3.35	2012	3.52
1993	3.19	2003	3.37	2013	3.50
1994	3.24	2004	3.40	2014	3.50
1995	3.25	2005	3.42	2015	3.54
1996	3.26	2006	3.42	2016	
1997	3.24	2007	3.47		
1998	3.26	2008	3.48		

